

## HEAD OFFICE

### AHMEDABAD

40/A, Panchratna Industrial Estate, B/h. Vivek Steel, Changodar-382 213,  
Ta. Sanand, Dist. Ahmedabad.[Gujarat] India. | +91 92280 25446 | info@flexibond.com

## NETWORK

### DELHI

Plot No: 227, Godown No:4  
G T Karnal Road, Bakoli,  
New Delhi - 110036

### CHANDIGARH

Village Pabhat, Ground Floor Zirakpur  
Tehsil Derabassi, Dis-Mohali Sas Nagar  
Punjab-140603

### JAIPUR

E-108, Road No.07, V.K.I. Area,  
Opp Lal Golden Transport,  
Jaipur-302013

### KOLKATA

P-62/A Circle Garden  
Reach Road, Kolkata - 700043

### GUWAHATI

Near HDFC Bank Ltd.,  
Maligaon Gate No:1,  
Guwahati-781011

### RANCHI

Ground Floor, Kedia Square,  
Baralal Street, Upper Bazar  
Ranchi-834001

### INDORE

13, 14, S K-01 Compound,  
Lasudiya Mori  
Devas Naka, Indore - 452010

### RAIPUR

Jhulelal Chowk, Nahar Para,  
Raipur [Chhattisgarh]  
India-492001

### SURAT

Plot No. 31 & 32b Ground Floor S K  
Industrial Society-2 Nr. Sosyo Circle  
Udhana Magdala Road, Surat - 395017

### MUMBAI

9, Tapo Commercial Premises,  
Ram Mandir Road, Goregaon  
West Mumbai-400104

### PUNE

Shop No.121 Prestige Point,  
283 Shukrawar Peth,  
Pune-411002

### NAGPUR

Plot No. 47 Garoba Maidan Shastri  
Nagar Chowk Bhandara Road,  
Nagpur-440008

### CHENNAI

No.11, Janaki Ammal Street,  
Nr. Kamraj Colony 9th Street,  
Kodambakkam, Chennai-600024

### HYDERABAD

No. 8-7-47 R.R. Nagar Old  
Bowenpally, Secunderabad-500011  
Hyderabad.

### ERNAKULAM

71/2686-2689 Keerthinagar,  
Deshabhimani Road, Elamakkara,  
Ernakulam-682026

### BENGALURU

No: 18 SY No.80/1, 1st Cross Road,  
Someswara Nagar, Mahalakshimpuram,  
Bengaluru-560022

### VADODARA

04 - Parmatma Park,  
Chaani Jakatnaka Circle,  
Vadodara - 390024

### RAJKOT

Indrajit Complex - 3,  
Opp. Shree Ram PUC,  
Godown Road, Rajkot



UMIYA FLEXIFOAM PVT. LTD.

+91 92280 25446  
info@flexibond.com  
www.flexibond.com



Follow us on:



**FLEXIBOND®**  
AN ATTACHMENT

A SENSE OF FREEDOM  
IN EVERY DESIGN



CORTEN - WOODEN - MARBLE



VOLUME 9.1



C O R  
T E N

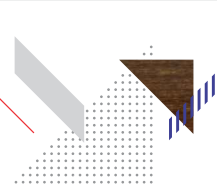
## **ABOUT US**

FLEXIBOND is a leading aluminium composite panel manufacturing brand since its inception in the year 2002. We have been dominating the industry with our innovative products such as PVC/WPC foam board, WPC solid doors, WPC solid door frames, and acrylic solid surface. Our organization is proud to stand on the pillars of hard-earned goodwill. FLEXIBOND has created a rich legacy for itself with an avant-garde product line that has distinctive products used for interior, exterior, facade, furniture, signage, and many other applications. These products are highly admired and recommended as they stand for their bankable features and salient product properties.

All these products are developed in an eco-friendly manner. We also contribute towards sustainable development which is why our company is accredited with ISO 9001: 2015, ISO 14001: 2015 and OHSAS 18001: 2007. Besides, we are also given the honour of being a part of the Indian Green Building Council.

## **CORTEN**

Flexibond is forever committed to exceeding your needs and so we have introduced our newest corten steel collection which displays a rustic antique appearance. In its most basic meaning, utilizing corten steel collection will present your structure with a look that's natural, rough, aged, and casual but at the same time has that modern tactility. In short, by applying these, you can kiss the conventional style goodbye!



Corten Copper      FB - 722 RC



Corten Bronze      FB - 723 RC



Corten Grey      FB - 724 RC

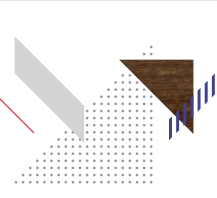


## **WOOD & RUSTIC WOOD**

Nature and its vividness are the inspiration for FLEXIBOND wooden wonders. Wooden series is available in various natural wood look finishes. FLEXIBOND Panels are pre-coated using photosensitive fluorocarbon agents and are subsequently cured using Ultra Violet rays. This helps panels gain improved durability, excellent surface finish, zero defects, stronger surface bond, and enhanced impact resistance.



W O O  
D E N



Brazilian Sucupira FB-821 RW



Illusion Teak FB - 828 RW



Novoceno Pine FB - 826



Dark Oak FB - 827 RW



Country Oak FB - 822 RW



Knotty Wood FB - 823 RW

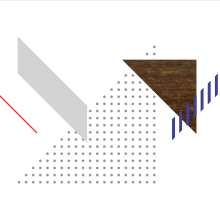


Cuban Chestnut FB - 824 RW



African Ipe FB - 825 RW





Saw Cut Wood FB - 817



Antique Wood FB - 818



Finland Cherry FB - 807



California Walnut FB - 815



Laurel Wood FB - 813



Ebony FB - 808



Burn Walnut FB - 816



Mexican Teak FB - 801

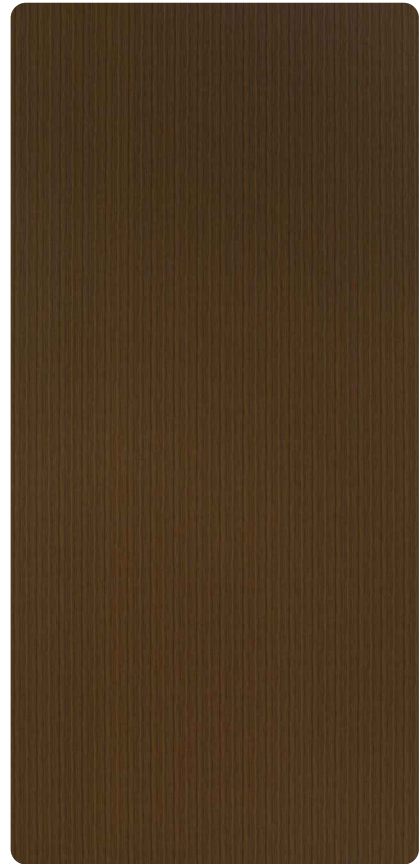
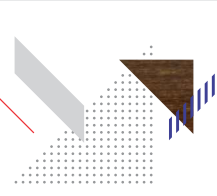


Canadian Cherry FB - 802



Gemini Oak FB - 809





Golden Teak FB - 812



Burma Teak FB - 814



Brazilian Walnut FB - 804



Sisam Wood FB - 810



Rose Wood FB - 811



African Sapeli FB - 805



Congo Sapeli FB - 806

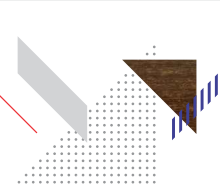
## MARVELOUS MARBLE SERIES

No one is immune to the affection of natural marble, such is their aura and appeal. However, they are scarce, expensive and difficult to maintain. Hence, to simplify the tougher part, we are here with Marble Finish sheets. Right from smooth surfaces to the rowdy patterns, you get it all here. It stands for endurance, authenticity and intrinsic value. The panel reflects light in a magical vibrant way ranging from rough to smooth. The natural and vibrant effects of these coated panel sheets are a perfect replacement for real stone, as it allows for lower costs of construction, ease of handling and maintenance of the buildings.



M A R  
B L E





Italian Crema FB - 701



Travertine Crema FB - 702



Italian Black FB - 708



Italian Brown FB - 709



Brown Fire FB - 710



Statuario FB - 711



Onyx Green FB - 706



Emperor Dark FB - 705

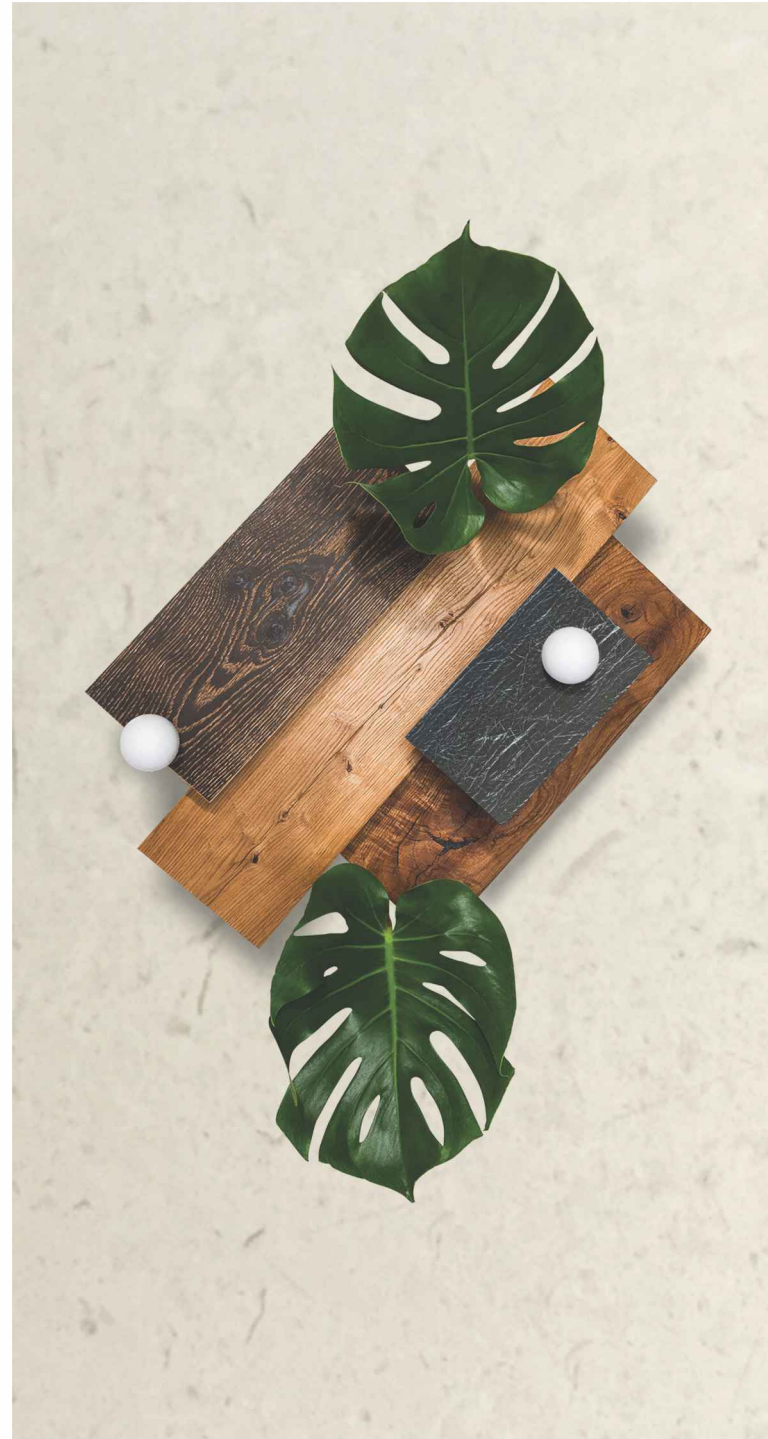


Forest Green FB - 707



Dove Grey FB - 721





**DISCOVER  
THE JOY OF SMOOTH  
CRAFTSMANSHIP.**

## Technical Specification

### Panel's Physical Properties

Product Grade	Panel Thickness	Coil Thickness	Core Thickness	Top Coil Coating Thickness	Back Coil Coating Thickness
FLX-450-Platinum	4.0 mm	0.50 mm	3.0 mm	26 $\mu$ $\pm$ 2 $\mu$ Beckers/PPG Germany	7 $\mu$ $\pm$ 2 $\mu$ Primer Coat
FLX-425-Gold	4.0 mm	0.25 mm	3.5 mm	26 $\mu$ $\pm$ 2 $\mu$ Beckers/PPG Germany	7 $\mu$ $\pm$ 2 $\mu$ Primer Coat
FLX-325-Gold	3.0 mm	0.25 mm	2.5 mm	26 $\mu$ $\pm$ 2 $\mu$ Beckers/PPG Germany	7 $\mu$ $\pm$ 2 $\mu$ Primer Coat

### Product Tolerance

Width	$\pm$ 2.0 mm	Coil Thickness	$\pm$ 0.02 mm
Length	$\pm$ 4.0 mm	Panel Thickness	$\pm$ 0.20 mm
Squareness	Maximum 5 mm	Bow	Maximum 0.5 % of width and/or Length

Surface defect : Surface shall not have any irregularities such as roughness, bucking and other imperfections.

### Standard Dimension

Thickness: 3 mm & 4 mm

Size: 1220 x 2440 mm | 1220 x 3050 mm | 1220 x 3660 mm  
[Special Thickness and Sizes Available on Request]

**FR GRADE MATERIAL**  
AVAILABLE ON REQUEST 

### HPL [available]

High-pressure laminate (HPL) is manufactured using aluminium coil with double layered PVDF/Lumiflon coating that is resistant to dust. It has a polyethylene core that makes it resistant to water, fungus and termite. It is more durable and efficient than wood in terms of its long-lasting lifespan and charm.

### Important Note

To avoid possible reflection differences, it is recommended to install the panel in the same direction as marked on the protective peel-off film. Color may vary from batch to batch, kindly ask for a sample. For installation, please follow the international standards.

